



THE INSTITUTE OF QUARRYING NEW ZEALAND INCORPORATED (Wellington Branch)

Time/ Date: 16 February 2019
Venue: GBC Winstone Aggregates Otaki Quarry
Sponsor(s): This event is kindly supported by:



PRE MEETING FIELD TRIP(S)

Prior to the meeting for those interested in attending we have arranged two field trips as follows:

10.00 WEBBS Quarry – (CPD = 1 hour Operations & Safety Systems)

11.30 Waitohu Quarry – (CPD = 1 hour Operations & Safety Systems)

IOQ MEETING

12.30 – 1pm Arrive, sign in and welcome and light lunch

1.15 GBC Winstones Otaki Quarry Site tour (CPD = 1 hour Operations & Safety Systems)

2pm MinEx Update – Wayne Scott (CPD = 1/2 hour Operations & Safety Systems)

2.30 Oral Exams & CPD - Charlie Strivens (WorkSafe), Matt Hill & Ashton Ulu (Horokiwi Quarry), Brian Bouzaid (Panel of Examiners) (CPD = 1 hour Leadership)

3.45 General Business

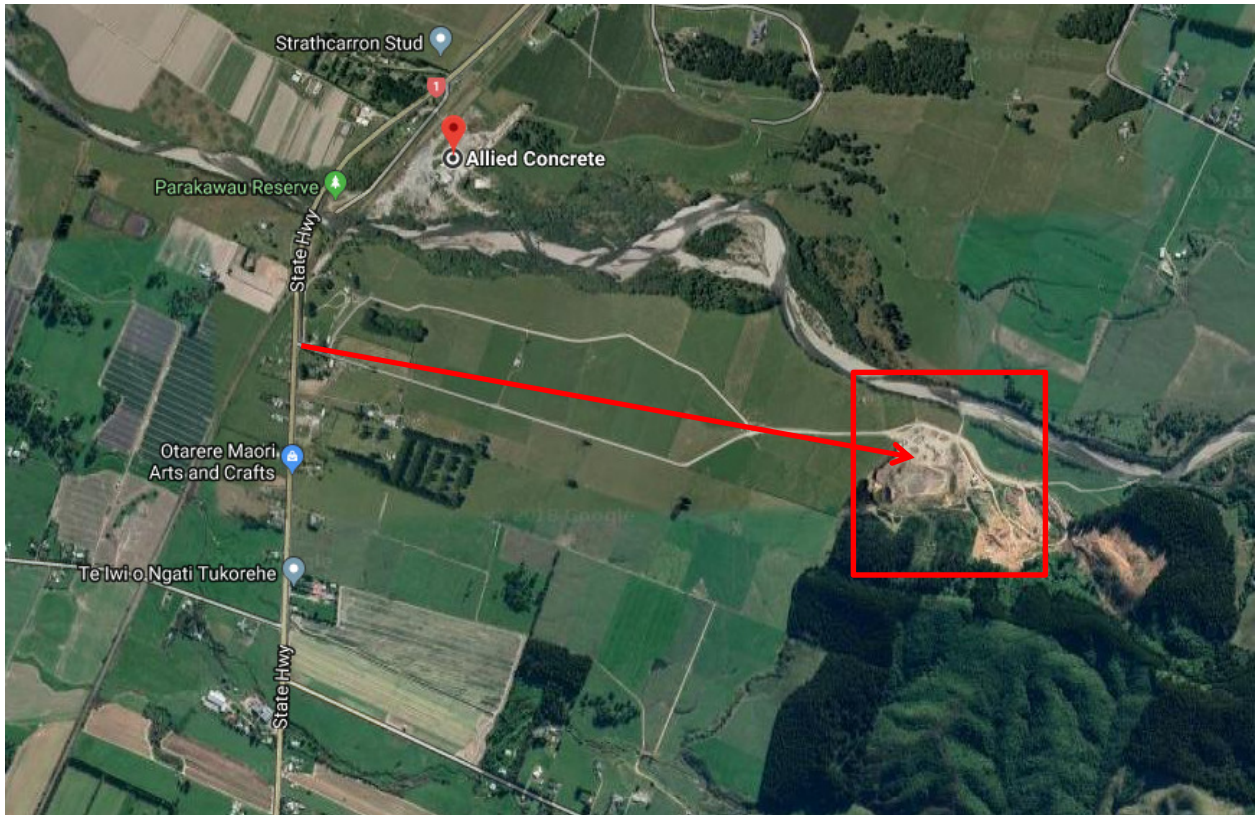
3.45 IOQ Wellington Branch AGM

Apologies and Condolences
Confirmation of Minutes of 2018 AGM
Matters Arising
Chairman's Report
Financial Accounts
Secretary's Report
Election of Officers (Chairman, Secretary, Committee)
General Business

PLEASE REMEMBER TO BRING YOUR PPE FOR FIELD TRIPS

Non-Members are welcome - Please place this on your notice

Webbs Quarry 561 State Highway 1 Levin



Waitohu Quarry, Waitohu Valley Rd, Rd 4, Otaki 5581



Non-Members are welcome - Please place this on your notice