



# NSW mine safety update

Promoting safety in the NSW mining industry

## New safety legislation introduced for NSW mines

The broad reform of NSW mine safety legislation has continued with the recent gazettal of the *Mine Health and Safety Regulation 2007*. The further extension of the *Occupational Health and Safety Regulation 2001* to the mining industry is expected to be gazetted early in 2008.

Together with the *Coal Mine Health and Safety Regulation 2006*, the new reforms will provide a contemporary and comprehensive legal framework protecting the safety of people working throughout all sectors of the NSW mining industry.

While the *Occupational Health and Safety Act 2000* and OHS Regulation 2001 remain the primary legislation regulating safety in all NSW workplaces, the new laws address risks specific to the mining industry.

The *Mine Health and Safety Act 2004* and MHS Regulation 2007 protect the health, safety and welfare of people working in the NSW metalliferous, extractive and opal mining industries. The *Coal Mine Health and Safety Act 2002* and CMHS Regulation 2006 provide the same protection for people working in the NSW coal mining industry.

"The new laws are designed to ensure that people in the NSW mining industry have access to protection from workplace injury and disease," NSW Minister for Mineral Resources Ian Macdonald said.

"Although the mining industry has achieved significant improvements in safety in recent years, the industry contains some of the most hazardous of any working environments and it is imperative we ensure workers are fully protected."

"The NSW Government is working towards a goal of zero fatalities and serious injury and the new safety legislation will provide a robust framework to help achieve this goal."

While the MHS Regulation 2007 was gazetted in late December 2007, duties under the legislation do not commence until 1 September 2008, giving industry time to prepare for their



*New legislation regulating safety in the metalliferous, extractives and opal mining sectors has been introduced.*

new responsibilities.

The MHS Regulation 2007 will replace the *Mines Inspection Act 1901* and *Mines Inspection General Rule 2000*. The existing legislation will remain effective until the end of the transition period to ensure the industry is protected, after which they will be repealed.

The legislative reforms have been introduced with an emphasis on stakeholder communication and contribution. Discussion papers, public comment periods and direct stakeholder interviews have been provided for each reform to ensure that the legislation is coherent, robust and enhances ease of

understanding and administration.

Arrangements have also been put in place to support implementation of the new legislation and effect a smooth transition. These include industry seminars throughout NSW and a range of guidance material on the NSW DPI website. As well as outlining the need for the reforms, they will provide information on the specific duties required by duty holders.

**Turn to pages 4/5 for more information on your responsibilities under the new legislation, industry seminars and guidance material**



In this issue...

New safety legislation for NSW mines	1
Mines Rescue Challenge	2
Delegates learn about safety and mental illness	3
Safety seminar presentations available online	3
Information seminars on new legislation	4
MHS Regulation duties and responsibilities	5
OHS Regulation to be extended to all NSW mines	5
Regional safety workshop proves popular	6
Driving course improves knowledge and skill	6
Unplanned movement of plant a major risk	7
Isolation procedures can help prevent fatalities	7
Investigation Unit expertise sought by New Zealand	8
NSW Minerals Industry OHS Conference	8
Safety Alerts and Safety Bulletins	9-10
Safe procedures required for all work tasks	10
Addressing the dangers of drugs and alcohol	11
Body recovery at mines guideline updated	11
Calendar of events	12
NSW DPI - Mineral Resources offices	12



One of the teams in action during a previous Mines Rescue Challenge at Cobar.

## Enter the Mines Rescue Challenge

In any rescue situation, teamwork is a crucial part of the emergency response. Yet most mines rescue teams are made up of volunteers who ordinarily have little chance of developing the necessary rapport to work effectively as a team, or opportunity to expand their rescue skills.

The Mines Rescue Challenge is the perfect opportunity for mines rescue teams to participate in realistic emergency scenarios designed to develop and test their knowledge, skills, leadership and teamwork abilities.

While there are several awards for individual efforts during the challenge, the most sought-after prize is the 'Esprit de Corps', or the spirit of the team award. At the last Mines Rescue Challenge this award was won by CSA Mine.

The next Mines Rescue Challenge is being held in Cobar on 28-30 March 2008. The challenge is open to both experienced and rookie teams, with a maximum of 12 teams able to participate. Registrations close on 27 February 2008.

If you would like to register your mines rescue team, volunteer to help out on the day or provide sponsorship, visit the NSW Mines Rescue Challenge website at [www.nswmrc.org.au](http://www.nswmrc.org.au)

ISSN 1444-5174

**Editors:** Tony Linnane, Laura Clyne

**Photography:** David Barnes, Mine Safety staff

**Design:** Nicole Irvine, Tony Linnane

© NSW Department of Primary Industries

NSW Department of Primary Industries

Mineral Resources Division

516 High Street

Maitland NSW 2320

PO Box 344

Hunter Region Mail Centre NSW 2310

Australia

**For any enquiries or to obtain publications:**

**T: 1300 736 122**

Editors please note: any articles in this issue of NSW Mine Safety Update can be reproduced with suitable acknowledgement of their source.

Information provided in this newsletter to promote the enhancement of the safety culture of NSW mining and to alert a wide range of people to potential risks and to potential risk controls. Each site must manage its own risk according to its own hazard identification, risk assessment, control systems and monitoring process. Whereas all care is taken in producing NSW Mine Safety Update, NSW Department of Primary Industries accepts no responsibility for accuracy of information supplied. Inclusion of any product, service or company in NSW Mine Safety Update does not imply NSW Government or NSW Department of Primary Industries endorsement.

## Are you a contractor?

Do you currently receive Safety Alerts and Safety Bulletins from NSW DPI?

If not, register to receive them by sending your details, including name, company, phone and email, to:  
[mine.safetyalert@dpi.nsw.gov.au](mailto:mine.safetyalert@dpi.nsw.gov.au)

## Delegates learn about safety and illness

More than 260 attendees from throughout the state gained some useful insights and essential safety information at the NSW Department of Primary Industries 17th Annual Electrical Engineering Seminar at Penrith.

A key-note presentation on living with bipolar disorder and depression was given by Craig Hamilton, author and ABC Radio presenter/reporter. Craig's harrowing and personal account of his slide from 'normal guy' into depression and eventual psychosis seven years ago, before being diagnosed with bipolar disorder, gripped the audience from start to finish.

Craig uses humour and brutal honesty to overcome the reluctance of men to talk about their mental health issues and to highlight the social stigma of mental illness as well as its pervasiveness in Australian society. He also used the opportunity to issue a word of warning to the mining industry where he once worked - to be mindful of the effects of fatigue and high stress levels on employees and to watch closely for signs of depression among workmates.

Changing legislation and the impacts on the mining industry were also key themes throughout the seminar.

Gavin Burns, Engineering Manager at Centennial Mandalong, provided an insight into the challenges the company faced during the implementation of the *Coal Mine Health and Safety Regulation 2006*. Centennial Mandalong used the new regulations as a catalyst for a full-scale review of their management plans, risk assessments, equipment and training. Gavin showed that impacts from the new regulation were "overwhelmingly positive and provided an opportunity to improve safety".

Daren McDonald, Manager Industry Standards and Practice at NSW DPI, provided an update on the *Mine Health and Safety Regulation 2007*, which was gazetted during December 2007. Daren also showed how the legislative reform program would "provide a comprehensive safety regime under two Acts (the *Occupational Health and Safety Act 2000* and *Mine Health and Safety Act 2004*) and was a major part of the Government's ongoing program of improving mine safety".

John Waudby, Senior Inspector of Electrical Engineering at NSW DPI, also presented the 2006/07 Industry Scorecard. The scorecard charts electrical safety incidences within the mining industry over successive years to show patterns of concern, as well as areas of improvement for industry.

A range of case studies was also provided by industry representatives and occupational health and safety experts to give practical



*Author, ABC reporter/announcer and former mine worker Craig Hamilton shares his experiences with bipolar disorder during his keynote address to the Electrical Engineering Safety Seminar at Penrith.*

examples and solutions in overcoming electrical safety issues in the mining industry.

For a copy of presentations from the Electrical Engineering Safety Seminar visit the NSW DPI website at:

**[www.dpi.nsw.gov.au/minerals/safety/publications/seminar-presentations](http://www.dpi.nsw.gov.au/minerals/safety/publications/seminar-presentations)**

## Seminar presentations available for free download from NSW DPI website

A new section of the NSW DPI Mine Safety website has been created to publish presentations from NSW DPI seminars and conferences.

Presentations and papers are already available from the 2007 Plant Safety in the Mining Industry Seminar and the 2006 Coal Mine Health and Safety Act and Regulation Industry Information Seminars, in addition to the Mechanical and Electrical Engineering Safety Seminars. There are also presentations from NSW DPI representatives

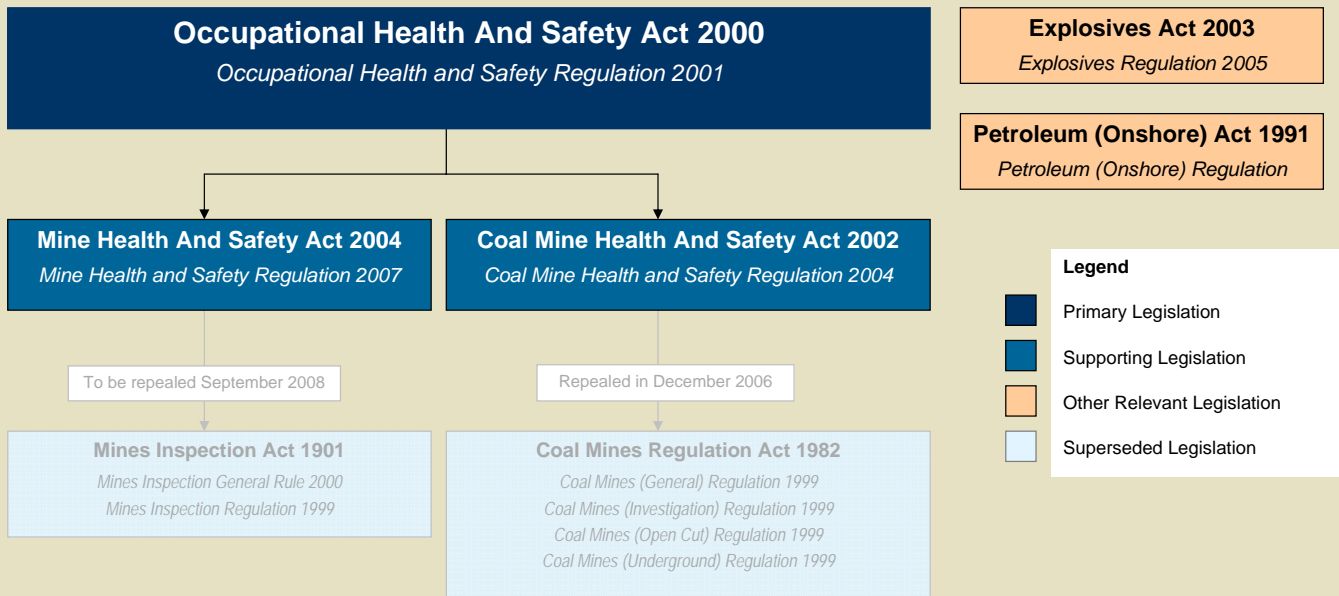
at the 2007 NSW Minerals Council OHS Conference and general presentations on mechanical and electrical engineering issues.

As more information is added to the new section, it will also become a valuable online facility for researching past presentations.

To check out what is already available, visit the NSW DPI website at:

**[www.dpi.nsw.gov.au/minerals/safety/publications/seminar-presentations](http://www.dpi.nsw.gov.au/minerals/safety/publications/seminar-presentations)**

## MINE HEALTH AND SAFETY LEGISLATIVE FRAMEWORK



## Help available to understand new safety requirements

The new mine safety legislation creates particular responsibilities for people in the metalliferous, extractives and opal mining sectors and sets out new powers and administrative arrangements. To make it as easy as possible to comply with the new legislation, NSW DPI has created a suite of support materials and a series of workshops throughout the state.

The support material is available from the NSW DPI website and includes:

- Summaries of Acts and Regulations
- Guidance Notes
- Technical References
- Reporting Forms
- Audit Tools
- Codes of Practice
- Question and Answer guides

The workshops will provide an outline of the new legislation, details on new responsibilities for duty holders and timeframes for implementation. Information will also be provided on how the new legislation works with existing laws, and NSW DPI Inspectors and Mine Safety Officers will be available to answer questions.

To ensure the workshops are relevant to all areas of the industry, they will be tailored to provide specific content based on the type and scale of mining mostly present in each region. Local NSW DPI Inspectors will also be available at each workshop to provide local content.

The workshops will be held at a range of locations across NSW

For copies of the support material, or further information on workshop dates and venues, visit the NSW DPI website at:

[www.dpi.nsw.gov.au/minerals/safety/legislation/mines](http://www.dpi.nsw.gov.au/minerals/safety/legislation/mines)

## Industry information seminars

- March 11: **Queanbeyan** (Comfort Inn Airport)
- March 12: **Batemans Bay** (Catalina Country Club)
- March 17: **Wagga Wagga** (Wagga Wagga RSL Club)
- March 19: **Deniliquin** (Deniliquin RSL Club)
- March 26: **Penrith** (Penrith Panthers)
- March 27: **Wollongong** (Government Office Block)
- April 1: **Cobar** (Town and Country Motel)
- April 3: **Broken Hill** (Broken Hill Musicians Club)
- April 8: **Maitland** (Bradford Hotel)
- April 10: **Port Macquarie** (Westport Bowling Club)
- April 14: **Lismore** (Invercauld House, Goonellabah)
- April 16: **Tamworth** (NSW DPI Agricultural Centre)
- April 21: **Orange** (Orange Ag Institute Training Centre)
- April 22: **Dubbo** (Dubbo RSL Club)
- May 7: **Lightning Ridge** (L Ridge Bowling Club)
- May 20: **White Cliffs** (White Cliffs Sporting Club)

Industry stakeholders are encouraged to attend these free information seminars. Register your intent to attend by email to: [minesafety.seminars@dpi.nsw.gov.au](mailto:minesafety.seminars@dpi.nsw.gov.au)

Alternatively, telephone one of the following NSW DPI Mine Safety offices to register your intent:

<b>Armidale</b>	02 6738 8502	<b>Maitland</b>	02 4931 6626
<b>Broken Hill</b>	08 8088 9300	<b>Orange</b>	02 6360 5333
<b>Cobar</b>	02 6836 6000	<b>Wollongong</b>	02 4222 8301
<b>Lightning Ridge</b>	02 6829 9200		

## First duty is to nominate a mine operator

The *Mine Health and Safety Act 2004* and *Mine Health and Safety Regulation 2007* were proclaimed on 21 December 2007.

From 1 September 2008 mines may not operate unless the mine holder has nominated a mine operator, and the mine operator has a health and safety management system in place that meets the requirements of the legislation.

Mine holders may now lodge their nominations of mine operators with the NSW Department of Primary Industries. To avoid the risk of disruption to mining activities and to afford the department a reasonable time to process your nomination, mine holders are urged to lodge their nominations with the department prior to 1 June 2008.

The mine holder is the person or corporation with the right to mine and must provide the mine operator with relevant information.

The mine operator is the person or corporation with day-to-day control of the mining work and will be responsible for planning and co-ordinating safety at the mine (including the work of contractors).

Mine operators who already have sound risk management practices and safety plans in place should be well placed to satisfy the requirements of the new legislation.



*Nominating a mine operator is the first duty for mine holders under the Mine Health and Safety Act and Regulation.*

### What you need to do

1. Mine holder should nominate a mine operator prior to 1 June 2008.
2. Mine operator must have a Mine Safety Management Plan that complies with the legislation by 1 September 2008.
3. Mine holders should become conversant with the mine operator's duties and the duties with respect to notifiable incidents.
5. Mine operators must prepare quarterly reports in accordance with the Mine Health and Safety Act.
6. Mine operators should ensure they are conversant with new duties regarding contractor management.

## OHS Regulation will soon apply fully to the mining industry

The *Occupational Health and Safety Act 2000* and the supporting *Occupational Health and Safety Regulation 2001* are the principal laws to ensure the health, safety and welfare of persons at work across all industries in NSW. The OHS Act applies in full to the NSW mining industry. The OHS Regulation will soon be fully extended to the NSW mining industry.

The OHS Regulation identifies a range of risk controls for common hazards associated with the working environment, plant and dangerous goods and hazardous processes or work. It affords protection from common risks that may be found across a variety of industries but did not cover risks specific only to the mining industry.

To ensure that people in the NSW mining industry have access to the same level of protection from workplace injury and disease as other workers, the NSW Government is working to remove these barriers in the OHS Regulation that limit its coverage of mine worker health and safety.

Most parts of the OHS Regulation will apply to coal and mining workplaces, with a small number that will be limited in application. For further details on the limited applications, refer to the support material available at:

[www.dpi.nsw.gov.au/minerals/safety/legislation](http://www.dpi.nsw.gov.au/minerals/safety/legislation)

### What you need to do

1. Identify what duties you have under the OHS Regulation
2. Read the OHS Regulation 2001 in conjunction with the Mine Health and Safety Regulation 2007 or the Coal Mine Health and Safety Regulation 2006
3. Note that you must comply with the OHS Regulation and/or the MHS Regulation and CMHS Regulation
4. Note that the OHS Regulation prevails if you cannot comply with both
5. Note that 24 Codes of Practice made under the OHS Act will be applied to the industry to provide practical guidance.

# Regional workshops help spread important safety information

A NSW DPI Safety Awareness Day held at Western Plains Zoo Conference Centre in Dubbo last year drew a strong crowd of more than 60 attendees, an outstanding response for a regional event.

The day provided an overview of topical mine safety issues, including safe use of vehicle loading cranes, issues arising from recent electric shock incidents from welding, coronial inquest findings for tyre fatalities in NSW and Queensland and critical safety systems for mobile equipment such as braking, steering and warning systems.

There was a strong emphasis on the lessons to be learnt from recent incidents.

NSW DPI presenters also used the opportunity to reinforce the importance of regularly reading and distributing Safety Alerts and Safety Bulletins and implementing relevant

recommendations.

The Safety Awareness Day was attended by managers, supervisors, operators, mechanical tradespeople and mechanical engineers from local mines and mining contractors.

The feedback from attendees was very positive.

The question and answer sessions in particular provided a valuable opportunity to discuss relevant issues with NSW DPI Inspectors and Mine Safety Officers, who were available on the day to provide expert advice.

For information on other upcoming mine safety events visit the NSW DPI website at:

**[www.dpi.nsw.gov.au/minerals/minesafety](http://www.dpi.nsw.gov.au/minerals/minesafety)**

*NSW DPI Inspector of Mechanical Engineering Peter Sunol makes a point at the safety day at Dubbo.*



## Driving course improves staff knowledge and skill

Providing driver training courses for employees who have to drive regularly for work purposes creates a safer working environment and also helps employers meet their obligations under the *NSW Occupational Health and Safety Act 2000*.

The OHS Act requires employers to provide information, instruction, training and supervision to ensure the employees' health and safety at work.

NSW DPI Mine Safety Officers and Inspectors who drive on a daily basis as part of their duties recently attended a mandatory driver training course. This is part of workplace training plans and taken as a refresher course every five years. NSW DPI has also made the NRMA 'Safer Driving' DVD available to all staff.

The course held at Oran Park Raceway involved a blend of classroom and practical elements including lectures, demonstrations of techniques and valuable on-road experience with an instructor.

The course covered defensive driving attitudes, reading the road, vehicle dynamics, braking techniques, emergency braking,



*NSW DPI Inspectors and Mine Safety Officers take a break from the safe driving course in Sydney.*

cornering, human responses, anti-skid techniques, appropriate speed, traction control and vehicle loading.

The training allowed officers to practise emergency situations in a number of simulated conditions using their own work vehicles. Shortly after completing the course, an officer was involved in an uncontrolled skid on an icy road. Fortunately, the staff member was able to put techniques taught

during the training session into practice and avoided a serious accident.

All participants found the training course rewarding and noticed an improvement in their driving abilities, greatly increasing their confidence in being able to deal with an emergency situation. The course provided knowledge and practical skills that will help them to perform their duties competently and safely.

# Unplanned movement of plant a major risk

A recent unplanned movement of plant incident in Queensland has reinforced the importance of plant safety in the mining industry.

The incident occurred when a vehicle lunged forward as it was switched on. Fortunately nobody was injured, however, this type of incident poses a real threat of serious injury or death.

An industry round table was established in 2006 to identify and help overcome the risks posed by earth moving equipment when used on mine sites.

The Earth Moving Equipment Safety Round Table (EMESRT) is currently working with manufacturers to develop and implement improved earth moving equipment designs.

The Queensland Department of Mines and Energy – Mines Inspectorate released Safety Alert No. 162 on the incident on 24 May 2007. The NSW Department of Primary Industries also released Safety Bulletin SB07-03 on 15 June 2007.

The Queensland DME Safety Alert can be found at [www.nrw.qld.gov.au/mines/](http://www.nrw.qld.gov.au/mines/)



*Unplanned movement of plant poses a serious risk to the health and safety of people working at mines.*

**safety\_health** and the NSW DPI Safety Bulletin can be found at [www.dpi.nsw.gov.au/minerals/safety/safety-bulletins](http://www.dpi.nsw.gov.au/minerals/safety/safety-bulletins)

For information on EMESRT visit the website at [www.mishc.uq.edu](http://www.mishc.uq.edu)

## Fatalities serve as a reminder of the need for isolation procedures

A series of fatalities in the United States serve as a tragic reminder of the danger of complacency around moving machinery, such as conveyors.

Four fatalities occurred within a five-week period in late 2007 that all involved workers with extensive experience in the mining industry and moving conveyors that had not been isolated, including:

- a loader operator with 38 years experience was struck by a return roller while walking underneath a moving conveyor as it was being repaired
- a labourer with 32 years experience became entangled in a pulley while using a shovel under a moving conveyor belt
- an electrician with 26 years experience fell onto a moving conveyor belt while attempting to repair a faulty circuit breaker
- a miner with 5 years experience was hit by falling rock while shovelling along a moving belt conveyor.

NSW DPI issued Safety Alert SA06-19 in

November 2006 after the operator of a crushing and screening plant had two-and-a-half fingers amputated when he became caught in a moving conveyor. The operator was using a steel bar to free a blockage in a transfer chute while the plant was still running.

It is recommended that all employees receive annual training in the need to isolate machinery before attempting to carry out any work in the vicinity of moving plant. Isolation procedures should be clearly stated and supervisors should regularly observe and enforce compliance.

Risk management procedures should also be applied to plant design to identify and eliminate blockages using engineering solutions where possible.

NSW DPI Safety Alerts available at:

[www.dpi.nsw.gov.au/minerals/safety/safety-alerts](http://www.dpi.nsw.gov.au/minerals/safety/safety-alerts)

US Fatalgrams available at:

[www.msha.gov](http://www.msha.gov)



*Isolating energy sources to moving machinery, such as conveyors, are essential before work on the plant is undertaken.*

## Investigation Unit's expertise sought by NZ

NSW DPI's Investigation Unit has once again been asked to share knowledge and experience with counterparts in New Zealand by assisting in the investigation of the cause of a fatality at an underground coal mine.

The Unit's Senior Investigator Tony Smith was previously involved in a peer review of the investigation into the fatal incident at Tiller Mine in March 2006, a small coal mine on the west coast of New Zealand's South Island. The fatality was the result of an inrush of water from the old workings of an adjacent abandoned mine.

The New Zealand Department of Labour (NZDL) charged the mining company, the mine manager/deputy and another individual as an outcome of the investigation. The mining company pleaded guilty to the charges while the mine manager/deputy was found guilty of three charges. Court proceedings are continuing in relation to the other individual charged in relation to this incident.

NSW DPI's knowledge of the incident from the peer review process and good standing in the industry subsequently led to the request for Tony Smith to become an expert witness at the prosecution in early November 2007.

In thanking NSW DPI for its participation, NZDL said that NSW DPI's involvement contributed significantly to the quality and rigour of the investigation and the validity of its findings.

NSW DPI's Investigation Unit also provided major assistance with the investigation into the 2006 Beaconsfield mine collapse in Tasmania.



*Investigators (right) at the scene of a fatality from an inrush of water at the Tiller Mine in New Zealand.*

## Technology centre provides key services

Gas monitor compliance testing and calibration are just two of the important services that are provided by the Mine Safety Technology Centre at Thornton.

Before a gas monitor is permitted to be used in an underground coal mine, its performance needs to be assessed. The monitors need to comply with relevant sections of Australian Standards AS/NZ 61779 Electrical Apparatus for the Detection of Flammable Gas and AS/NZS4641 Electrical Apparatus for detection of oxygen and other gases and vapours at toxic levels which are a battery of tests that usually take about two months to complete. These tests determine the accuracy and response times of the monitor as well as the effect of different conditions, such as pressure, temperature and vibration, on its performance.

The centre has more than 4000 metres of internal gas pipe work supplying over eight different industrial and scientific grade gases to its work areas. These gases can then be blended and mixed in proportions from percentage concentrations down to parts per million for calibration and test work using Wosthoff precision gas mixing pumps. The centre also has a range of certified gas standards available for calibration of gas chromatographs for the analysis of mine atmospheres. Two mobile gas testing laboratories are available for on-site gas analysis and diesel emissions testing. The centre also has capability for the testing of diesel particulate matter.

Contact MSTC Manager Geoff Slater  
on 02 4924 4001

## Minerals Industry OHS Conference

The NSW Minerals Industry OHS Conference will be held at Leura from May 11-14.

The theme for this year's conference is Next Quest - Designing Zero Harm.

The conference attracts more than 500 industry stakeholders and is the major mine health and safety event in NSW.

More information is available from the NSW Minerals Council or online at:

[www.nswmin.com.au](http://www.nswmin.com.au)



## SA07-07 Uncontrolled freefall of a crane hook

There have been two recent incidents at coal operations of crane operators inadvertently releasing the auxiliary hoist, sending the hook (100kg) into an uncontrolled free fall. In the first incident the crane was being used to demobilise a



demountable building using the main hoist and hook. The crane operator inadvertently released the auxiliary hoist, resulting in the auxiliary hook free falling and landing in close proximity to the dogman. The second incident occurred when maintenance personnel were attempting to remove the engine from a large excavator using the main hoist and hook. Again the crane operator inadvertently released the auxiliary hoist, allowing the hook to free fall, landing in close proximity to those attempting to remove the engine. In both circumstances there were no injuries although there was significant injury/fatality potential. The investigation into both incidents revealed some common issues. Both cranes were of the same type (from the same manufacturer). Both cranes were fitted with free fall capabilities which could be easily and inadvertently activated. Each of the cranes failed to have fail-safe interlocking to prevent inadvertent activation.

It is recommended that prior to the use of a crane at a mine site, inspect to see if the crane is fitted with free fall capabilities, where a crane is fitted with such a feature ensure this feature is interlocked in a positive and fail-safe manner (refer to AS 1418.1 – 2002 Cranes, Hoists and Winches – General Requirements, Clause 11.4.2 Interlocking of controls), where such a feature is required during operation, ensure this gravitational hazard has been identified in the risk review and the appropriate controls put in place, where cranes were manufactured before the requirement to provide interlocking of controls a review of the current controls is required to ensure they provide the equivalent level of safety to that required by the current Australian Standards.



## SA07-08 Polyurethane workshop floor pad becomes a projectile

A contractor received extensive head injuries when a workshop floor pad was forcefully ejected from beneath a front end loader

bucket. The contractor was in the process of setting up the loader in a workshop to carry out maintenance. A polyurethane pad (400mm x 470mm x 40mm weighing 9.6kg) was placed under a centre bucket tooth to prevent concrete spalling. The loader bucket was then tilted slightly forward which caused the pad to be expelled out and upwards, striking the contractor forcefully in the forehead. Investigations into the incident are continuing.

## SB07-09 Fatality involving loader

A Queensland loader operator was recently fatally injured after losing control after the engine stalled while travelling downhill on an exploration track. The braking system was ineffective and the loader toppled over, crushing the operator between the cab and the ground. The Queensland Department of Mines and Energy – Mines Inspectorate released Safety Alert No 171 ([www.nrw.qld.gov.au/mines/safety\\_health.html](http://www.nrw.qld.gov.au/mines/safety_health.html)) on the incident on 13 September 2007. A truck driver was fatally injured at a NSW quarry in 2005 when the truck he was driving failed to negotiate a corner and rolled down an embankment. NSW DPI has released Safety Alerts addressing the issues of safety critical systems, braking, safe operating grades for mobile equipment and seatbelts. All mines should review the following alerts ([www.dpi.nsw.gov.au/minerals/safety/safety-alerts](http://www.dpi.nsw.gov.au/minerals/safety/safety-alerts)) and ensure safety critical systems are functional and seat belts are worn; SA06-07 *Seatbelts must be worn*, SA06-12 *Maintenance of safety critical systems – braking, steering and warning systems*; SA06-13 *Braking standards for trucks*; SA06-14 *Safe operating grades for mobile equipment*. Consideration of these alerts is necessary to prevent future occurrences of like incidents.

## SB07-10 Hazardous energy control

In recent years fatalities and serious bodily injuries have occurred in the NSW mining industry because of hazardous energy. Mining Design Guideline MDG 40 *Guideline for Hazardous Energy Control (isolation or treatment)* has been revised and released by the Mine Safety Operations branch of the NSW Department of Primary Industries. The revised guideline is available online at: [www.dpi.nsw.gov.au/minerals/safety/publications/mdg](http://www.dpi.nsw.gov.au/minerals/safety/publications/mdg)

All NSW mines should use the revised edition of MDG 40 *Guideline for Hazardous Energy Control (isolation or treatment)* to review and revise isolation procedures and review high-risk procedures to ensure that appropriate energy barriers are included to protect people when human error could lead to damaging outcomes.

*continued next page*

### Safety Alerts and Safety Bulletins

NSW DPI issues Safety Alerts following the occurrence of an event such as a fatal accident, dangerous occurrence or incident which is considered to be of significance to the industry, with the aim of preventing a similar occurrence. Safety Bulletins are also issued by NSW DPI. Like Safety Alerts, they contain information relating to safety issues but are not directly linked to a specific incident.

**If you would like to receive an email copy of Safety Alerts and Safety Bulletins, email your contact details to [mine.safetyalert@dpi.nsw.gov.au](mailto:mine.safetyalert@dpi.nsw.gov.au)**

continued from page 9

## SB07-11 Operator protective devices on mobile plant in underground coal mines

There appears to be industry confusion with respect to the provision, use and maintenance of operator protective devices (including rollover protective structures, falling object protective structures, operator restraining devices and seat belts) on mobile plant that operate in underground mines at a coal workplace.

For clarification of provisions in the *Occupational Health and Safety Regulation 2001* and the *Coal Mine Health and Safety Regulation 2006*, please refer to the full text of this safety alert available at [www.dpi.nsw.gov.au/minerals/safety/safety-bulletins](http://www.dpi.nsw.gov.au/minerals/safety/safety-bulletins).

To meet statutory obligations, all mobile plant in use (where a risk is established) must comply with one of the following;

- Be fitted with appropriate operator/passenger protective structures and seat restraints. (this is considered mandatory for newly designed and manufactured mobile plant)
- For mobile plant in use and not previously fitted with operator

protective structures nor seat restraints, the Mechanical Engineering Management Plan must make provision to install appropriate operator protective devices as soon as reasonably practicable. Interim risk control measures must be established during the transitional arrangements.

Risk control measures should include consideration to roadway conditions, speed, seam height, operator restraints, roof and rib support, machine stability, etc. Transitional arrangements and interim risk control measures should be documented and available for review by the NSW DPI inspectorate. Mines should specify a fixed date when operator protective devices will be fitted to all mobile plant as applicable. This date should be as soon as reasonably practicable.

■ Where it can be established that the installation of an operator protective structure is not reasonably practicable, under the provisions of clause 6 of the OHS Regulation 2001, then the reason and the alternative measures must be documented. Periodic reviews should be undertaken to substantiate the installation of an operator protective structure being not reasonably practicable. Where older equipment cannot comply, consideration should be given to using newer fit-for-purpose equipment which does comply.

**Find all Safety Alerts at: [www.dpi.nsw.gov.au/minerals/safety/safety-alerts](http://www.dpi.nsw.gov.au/minerals/safety/safety-alerts)**

## Seminars to address new Wiring Rules standard

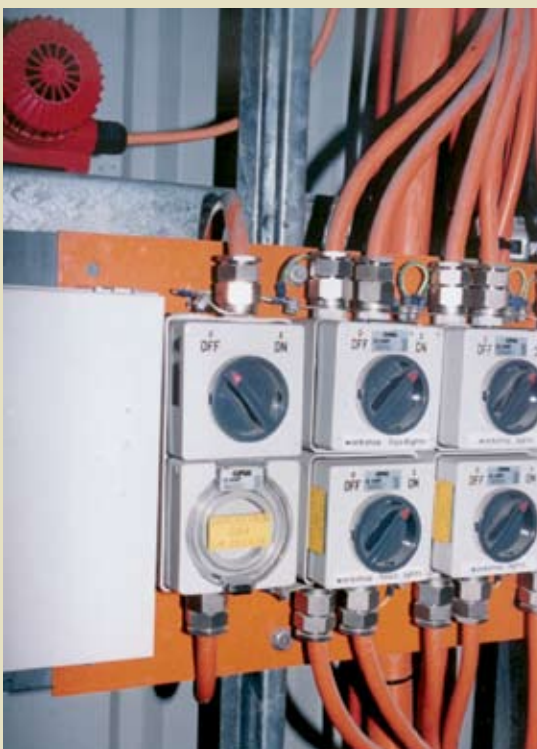
A revised Australian Standard for Wiring Rules - AS/NZS 3000:2007 - was introduced nationally on 12 November 2007. The Wiring Rules are called up in both the Coal Mine Health and Safety Regulation 2006 and Mine Health and Safety Regulation 2007.

The new requirements will affect the installation and verification practices of all licensed electricians and electrical contractors, as well as qualified electrical engineers and qualified electrical tradespersons (as defined in mining and coal mining legislation).

To ensure that everyone is up to date with the revised standard, SAI Global will be hosting a national series of half-day seminars in capital cities and key regional areas. The seminars will focus on the major changes and technical issues, including regulatory issues and enforcement and will also explain 'what you have to do now' that you 'did not have to do before'. A technical paper will also be presented on circuit protection, arcing faults and discrimination.

The wiring rules seminars will help anyone who refers to the standard to understand the changes to regulatory compliance, installation, verification, engineering, product and trade/training requirements.

The seminars are endorsed by the standards committee and will be



presented by members of the wiring rules committee, so you will be able to have your questions answered by the people who wrote the new standard.

NSW seminars are being held at the following locations;

- Sydney 15 April
- Grafton 17 April
- Parramatta 5 May
- Newcastle 6 May
- Penrith 7 May
- Wollongong 8 May
- Wagga Wagga 13 May
- Bathurst 14 May
- Dubbo 15 May
- Albury 5 June

All seminar sessions run from 1pm to 6pm. The seminar costs \$225 for SAI Global Buyer Advantage members and \$250 for non-members. Places at each session are limited, so it is

suggested you book early. To register your place call 1300 727 444 or book online at [www.saiglobal.com/training](http://www.saiglobal.com/training)

Copies of the new standard can be purchased by calling 131 242 or online at [www.saiglobal.com](http://www.saiglobal.com)

## Addressing the danger of drugs

A new fact sheet designed to assist employers address the misuse of alcohol and other drugs in the workplace was released by WorkCover last year.

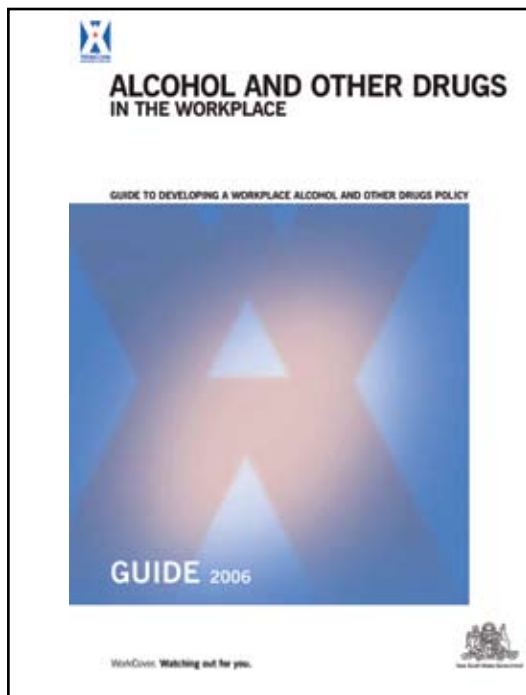
Establishing a policy to manage alcohol and other drugs in the workplace acts as a step-by-step guide for small and medium-sized businesses on how to develop a policy for managing the misuse of alcohol and drugs in the workplace.

Announcing the release of the guide, WorkCover Chief Executive Officer Jon Blackwell said workers affected by drugs or alcohol at work not only jeopardised their own safety, they placed their colleagues and others in the workplace at risk.

The fact sheet was developed in consultation with key industry stakeholders, including employers, unions and health workers. It supports the *Alcohol and Other Drugs in the Workplace* guide, released by WorkCover in February 2007.

Both the fact sheet and the guide are available from the WorkCover website at:

[www.workcover.nsw.gov.au](http://www.workcover.nsw.gov.au)



## Coal notification of incidents by email

The procedure for submitting Coal Notification of Incident forms has been streamlined, to provide a quicker and more effective process.

A new interactive version of the form can now be completed electronically and submitted by email directly to the closest NSW DPI Mine Safety office. This allows local NSW DPI Inspectors and administration staff to quickly and effectively process the forms.

A new email address has been created for each of the following NSW DPI offices. You will need to choose the location closest to you:

**Lithgow:**

[lithgow.coalnotification@dpi.nsw.gov.au](mailto:lithgow.coalnotification@dpi.nsw.gov.au)

**Maitland:**

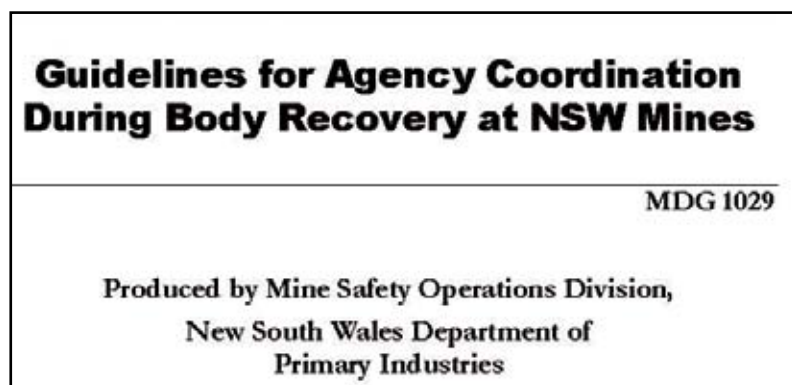
[maitland.coalnotification@dpi.nsw.gov.au](mailto:maitland.coalnotification@dpi.nsw.gov.au)

**Singleton:**

[singleton.coalnotification@dpi.nsw.gov.au](mailto:singleton.coalnotification@dpi.nsw.gov.au)

**Wollongong:**

[wollongong.coalnotification@dpi.nsw.gov.au](mailto:wollongong.coalnotification@dpi.nsw.gov.au)



## Body recovery at mines guideline updated

MDG 1029 *Guidelines for Agency Coordination during Body Recovery at NSW Mines* was initially introduced in response to a recommendation by the inquiry into the Gretley colliery disaster in 1996.

The guideline was designed to help co-ordinate inter-agency activities and clearly outline the duties and responsibilities of everyone involved in the recovery process following a mine tragedy. The guideline also aims to help ease the distress and trauma felt by relatives of those who have been fatally injured at a mine. The guideline was recently updated to include current information and is available online to all NSW DPI staff, other support agencies and mine operators at:

[www.dpi.nsw.gov.au/minerals/safety/publications/mdg](http://www.dpi.nsw.gov.au/minerals/safety/publications/mdg)

As the Coal Notification of Incident Form often needs to be submitted immediately, depending upon the nature of the incident, the new streamlined process will make it easier for operators to comply with their legal requirements.

If you use the electronic process, an additional signed copy of the completed form will still need to be mailed to your closest NSW DPI Mine Safety office and you will need to keep a copy of this form for at least five years.

The new interactive form is now available through the NSW DPI website at:

[www.dpi.nsw.gov.au/minerals/safety/resources/notifications](http://www.dpi.nsw.gov.au/minerals/safety/resources/notifications)

# CALENDAR OF EVENTS

**Mine Operators Workshops**, held regularly, Morilla Street, Lightning Ridge, contact Janet Town, DPI, 02 6829 0678

**Mine Safety Awareness Course**, held regularly, Lightning Ridge Bowling Club, contact Janet Town, DPI, 02 6829 0678

**Hunter Valley Underground Mine Mechanical Engineers Meeting**, Mine Safety Technology Centre at Thornton, held quarterly, contact Paul Drain, Mine Safety Officer, DPI (02) 4931 6652

**Hunter Valley Opencut Mine Mechanical Engineers Meeting**, Mine Safety Technology Centre at Thornton, held quarterly, contact Matt Willoughby, Mine Safety Officer DPI (02) 6571 8788

**Southern & Western Coalfields Mechanical Engineers meeting**, held quarterly, contact Graham Johnston, Mine Safety Officer, DPI (02) 4222 8307 or Wally Koppe, Inspector Mechanical Engineering, DPI (02) 4227 1699

**Introduction to Safety Management Workshop for small mines and quarries**, at various venues and dates throughout NSW, see NSW DPI website [www.dpi.nsw.gov.au/minerals/safety/resources/training-and-workshops](http://www.dpi.nsw.gov.au/minerals/safety/resources/training-and-workshops) for further details or contact Institute of Quarrying Australia ([education@quarry.com.au](mailto:education@quarry.com.au))

**Refining Your Safety Management Workshop for small mines and quarries**, at various venues and dates throughout NSW, see NSW DPI website [www.dpi.nsw.gov.au/minerals/safety/resources/training-and-workshops](http://www.dpi.nsw.gov.au/minerals/safety/resources/training-and-workshops) for further details or contact Institute of Quarrying Australia ([education@quarry.com.au](mailto:education@quarry.com.au))

**Mechanical Safety Presentations to the Extractive Industries**, closed workshop 'onsite', held periodically throughout the year as required. Generally workshops are not open to broader industry however if you would like more information please contact Angus McDouall, Inspector Mines, DPI (02) 6738 8509 or Paul Drain, Mine

Safety Officer, DPI (02) 4931 6652 (Nth Coast) or Matt Willoughby, Mine Safety Officer, DPI (02) 6572 1899 (Mid North Coast)

**Hunter Valley Electrical Engineers meeting**, held bi-monthly on the first Friday of the month — venues change for each meeting, contact Steve Bentham, Inspector Electrical Engineering DPI (02) 4931 6653 or Owen Barry, Inspector of Electrical Engineering (023) 6571 8708

**Southern and Western Coalfields Electrical Engineers meeting**, TestSafe, Londonderry, held quarterly (limited numbers), contact Bob Kennedy, Inspector of Electrical Engineering (02) 4227 1699 or 0417226 362

**HIESN (Hunter Industry Electrical Safety Network) meeting**, held monthly on the first Thursday of each month — venues change, contact Peter Henderson, Tomago Aluminium 0408 683 544

**Western & Central Western NSW (Cobar, Broken Hill, Orange) Mine Electrical Engineer meeting**, held at various venues and dates throughout the year, contact Stan Maginnis, Inspector of Electrical Engineering, (02) 6351 3052 or 0417223 875

**Remote Control Equipment Advisory Group meeting**, invitation required, held quarterly, contact John Waudby, Senior Inspector of Electrical Engineering, (02) 4931 6641 or 0418 295 656

**MEMMES (Mining Electrical and Mining Mechanical Engineers Society of the IEAust) Meeting**, held monthly, contact Peter Whipp, President 0427 425 798

**Mine Health and Safety Regulation 2007 Industry Workshops** will be held during March-May 2008 at venues around the state. For further information see page 4 or visit the NSW DPI website at [www.dpi.nsw.gov.au/minerals/safety/legislation/mines](http://www.dpi.nsw.gov.au/minerals/safety/legislation/mines).

*For more information go to: [www.dpi.nsw.gov.au/minerals/safety/resources](http://www.dpi.nsw.gov.au/minerals/safety/resources)*

## NSW DPI — Mineral Resources Offices

### MAITLAND

NSW Department of Primary Industries  
Mineral Resources  
516 High Street, Maitland NSW 2320  
(PO Box 344, Hunter Region MC NSW 2310)  
Phone: (02) 4931 6666, Fax: (02) 4931 6790

### ARMIDALE

NSW Department of Primary Industries,  
Earth Sciences Building (C2)  
University of New England, Armidale NSW 2350  
Phone: (02) 6738 8500, Fax: (02) 6772 8664

### BROKEN HILL

Level 2, 32 Sulphide Street,  
Broken Hill NSW 2880  
(Note changed PO Box number)  
(PO Box 696 Broken Hill NSW 2880)  
Phone: (08) 8088 9300, Fax: (08) 8087 8005

### COBAR

Government Offices, 62–64 Marshall Street,  
Cobar NSW 2835  
(PO Box 157 Cobar NSW 2835)  
Phone: (02) 6836 6000, Fax: (02) 6836 4395

### LIGHTNING RIDGE

Lot 60 Morilla Street, Lightning Ridge NSW 2834  
(PO Box 314 Lightning Ridge NSW 2834)  
Phone: (02) 6829 9200, Fax: (02) 6829 0825

### LITHGOW

Suite 1, Level 1, 184 Mort Street,  
Lithgow NSW 2790  
(PO Box 69 Lithgow NSW 2790)  
Phone: (02) 6350 7888, Fax: (02) 6352 3876

### LONDONDERRY

Core Library  
947–953 Londonderry Road,  
Londonderry NSW 2753  
Phone: (02) 4777 0322, Fax: (02) 4777 4397

### ORANGE

(Note changed address and telephone numbers)  
161 Kite Street, Orange 2800  
(Locked Bag 21, Orange NSW 2800)  
Phone: (02) 6360 5333, Fax: (02) 6360 5363  
After hours – emergency only – (02) 6360 5343



NSW DEPARTMENT OF  
PRIMARY INDUSTRIES

### SINGLETON

1 Civic Avenue, Coal Services Building,  
Singleton NSW 2330  
(PO Box 51 Singleton NSW 2330)  
Phone: (02) 6571 8788, Fax: (02) 6572 1201  
THORNTON

### MINE SAFETY TECHNOLOGY CENTRE

8 Hartley Drive, Thornton NSW 2310  
(PO Box 343, Hunter Region Mail Centre,  
NSW 2310)  
Phone: (02) 4924 4000, Fax: (02) 4924 4080

### WOLLONGONG

State Government Offices  
Level 3, Block F, 84 Crown Street,  
Wollongong NSW 2500  
(PO Box 674 Wollongong NSW 2520)  
Phone: (02) 4222 8333, Fax: (02) 4226 3851

**NSW DPI—Minerals Resources, Tollfree 1300 736 122**