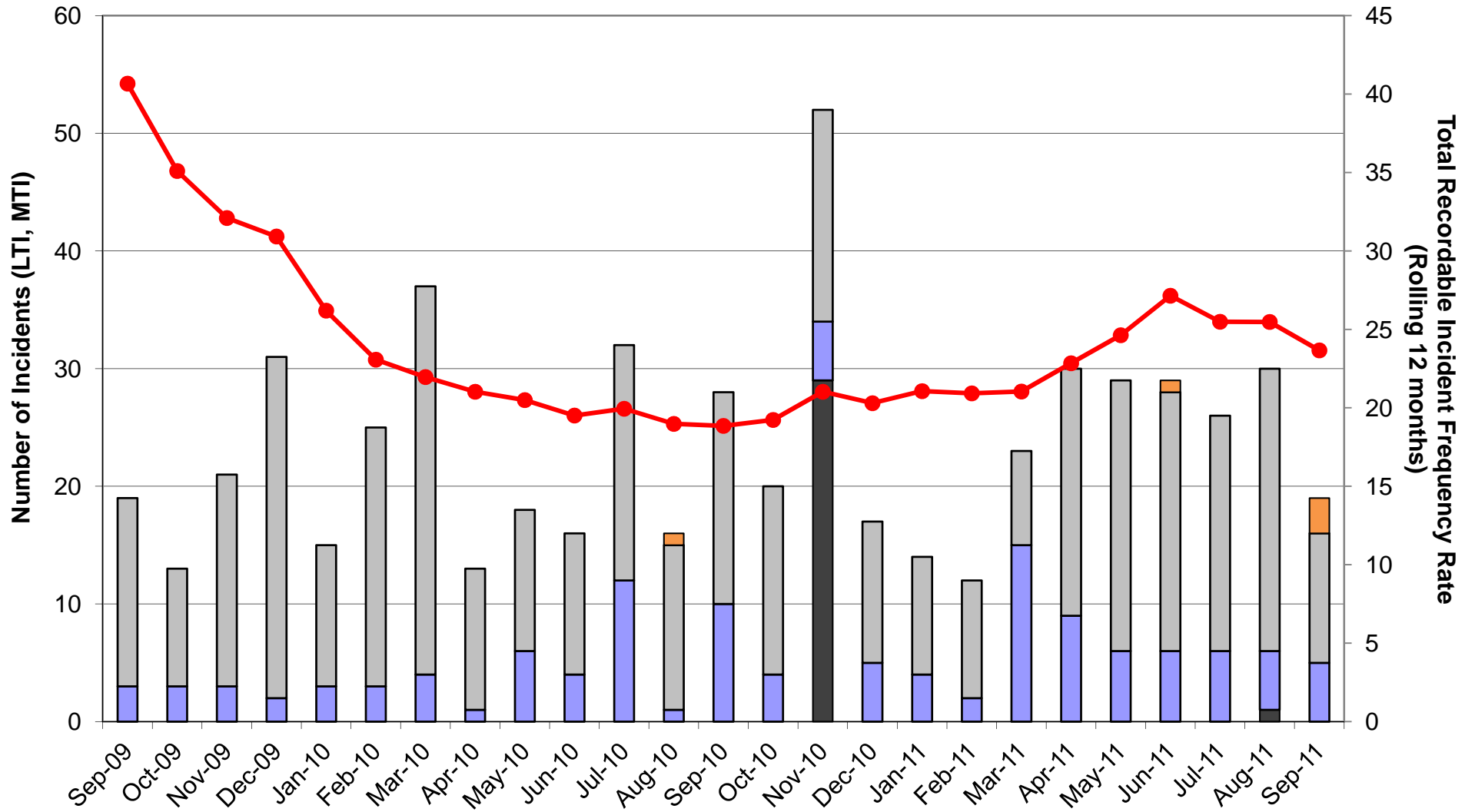
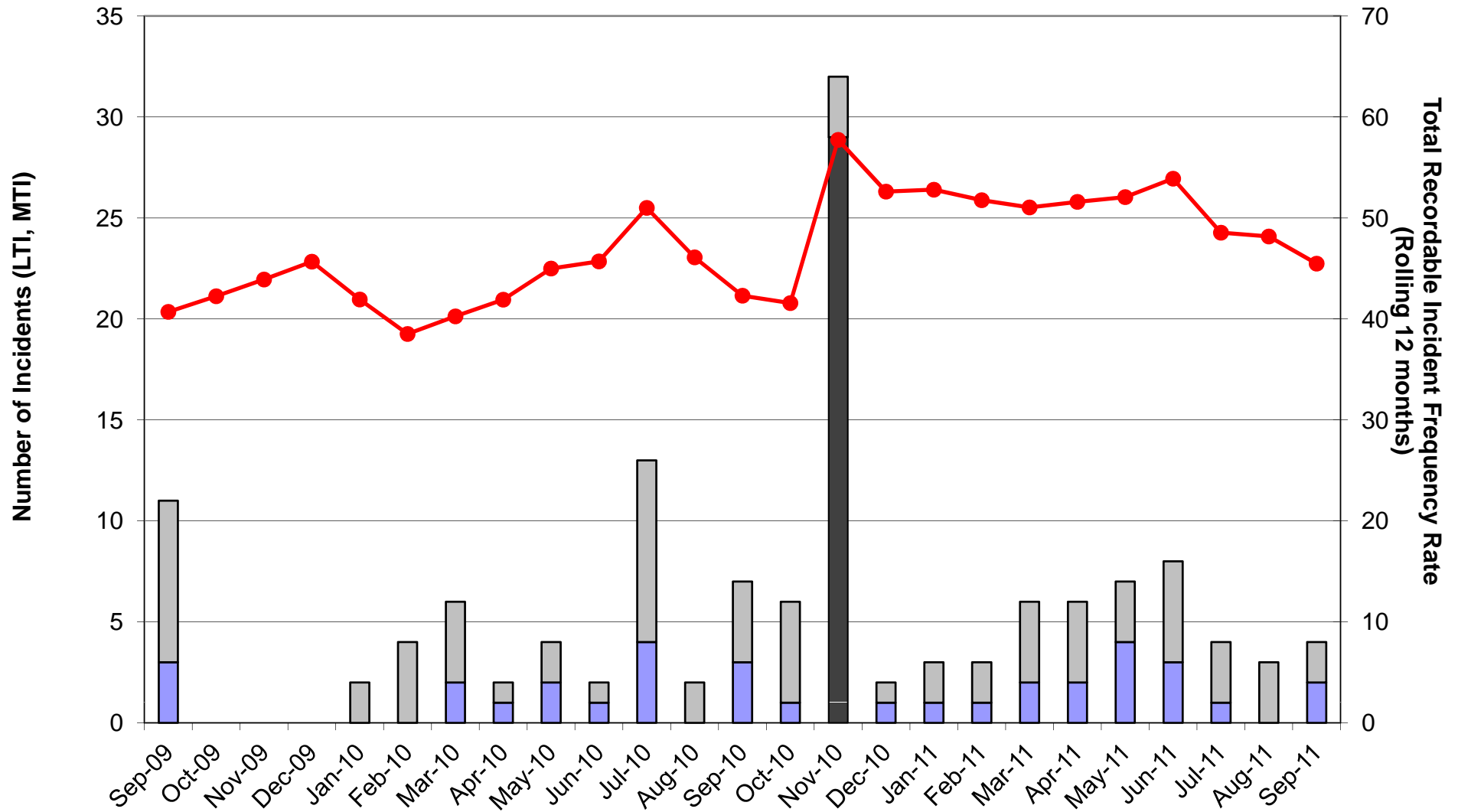


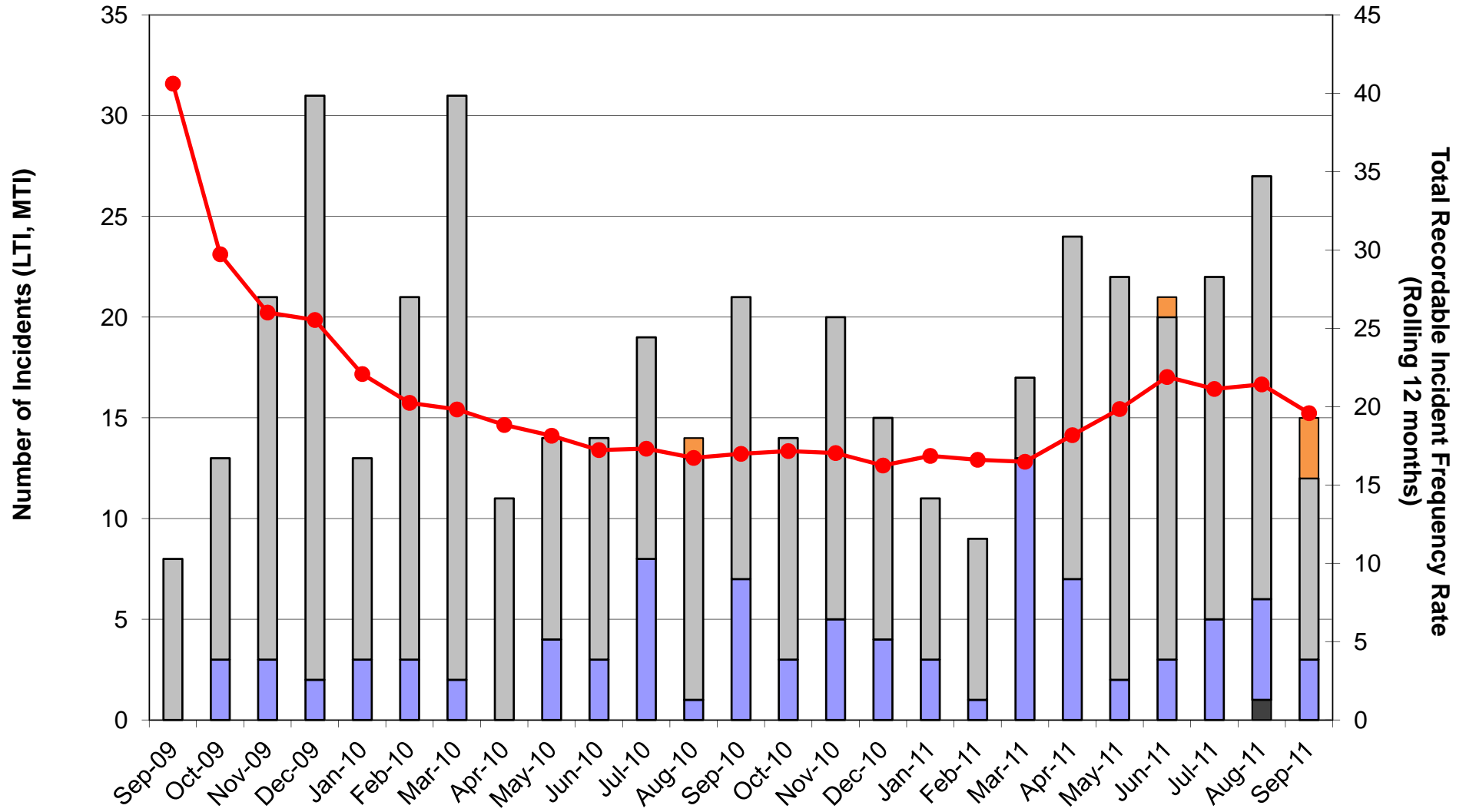
All Categories Lost Time Incident Record



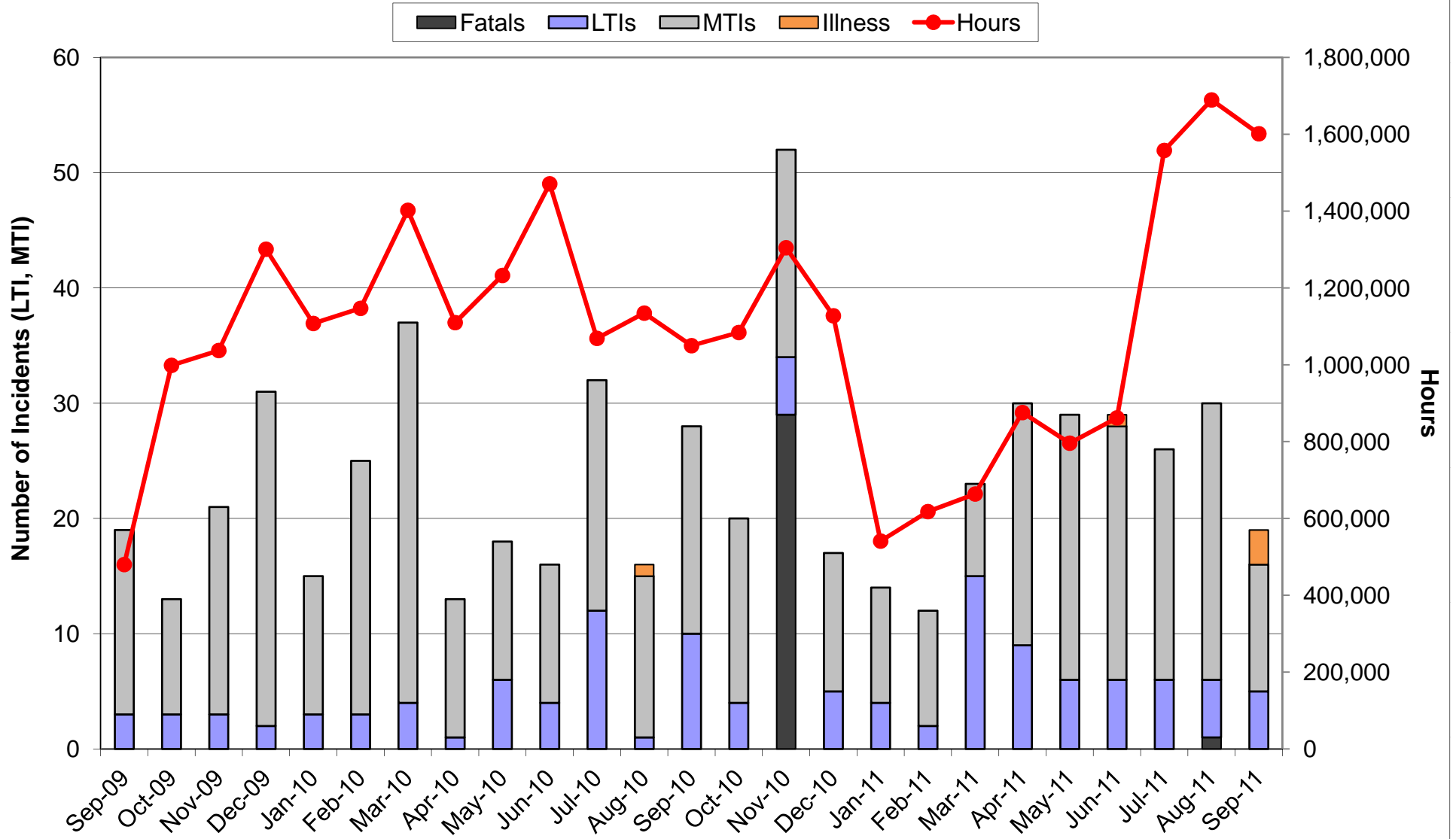
Underground Activity Incident Record



Surface Activity Incident Record

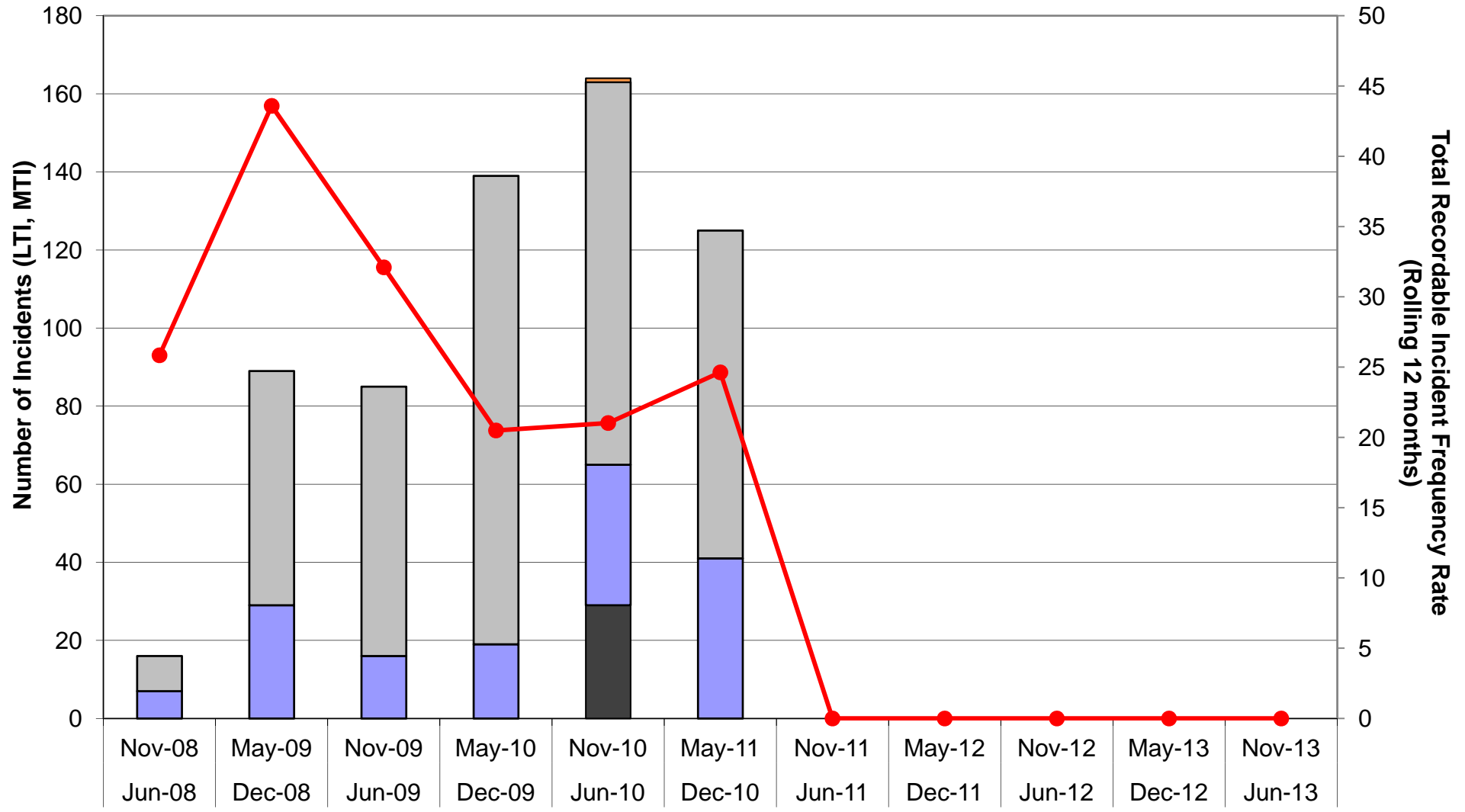


All Categories Lost Time Incident Record- Hours



All Categories Lost Time Incident Record- 6 Monthly

Fatalis
LTIs
MTIs
Illness
TRIFR Rolling 12 Mth



MinEx Health and Safety Incident Database



[Return to Main Page](#)

ALL Operations										Surface Only									Undergrou							
Month	LTI	MTI	Fatals	Illness	Total Injuries	Hours	Rolling TRI	Rolling Hours	TRIFR Rolling 12 Mth	Month	LTI	MTI	Fatals	Illness	Total Injuries	Hours	Rolling TRI	Rolling Hours	TRIFR Rolling 12 Mth	Month	LTI	MTI	Fatals	Illness	Total Injuries	
Sep-09	3	16			19	479,956	145	3,565,600	40.67	Sep-09		8			8	367,972	64	1,575,380	40.63	Sep-09	3	8				11
Oct-09	3	10			13	998,515	157	4,473,465	35.10	Oct-09	3	10			13	998,515	76	2,556,183	29.73	Oct-09						
Nov-09	3	18			21	1,037,119	174	5,420,535	32.10	Nov-09	3	18			21	1,037,119	93	3,575,605	26.01	Nov-09						
Dec-09	2	29			31	1,300,823	205	6,629,665	30.92	Dec-09	2	29			31	1,300,823	124	4,856,127	25.53	Dec-09						
Jan-10	3	12			15	1,107,570	190	7,253,110	26.20	Jan-10	3	10			13	998,515	127	5,750,517	22.08	Jan-10		2				2
Feb-10	3	22			25	1,146,970	182	7,888,926	23.07	Feb-10	3	18			21	1,037,119	135	6,668,502	20.24	Feb-10		4				4
Mar-10	4	33			37	1,402,154	193	8,788,145	21.96	Mar-10	2	29			31	1,300,823	156	7,868,996	19.82	Mar-10	2	4				6
Apr-10	1	12			13	1,109,731	206	9,797,872	21.02	Apr-10		11			11	1,013,500	167	8,867,249	18.83	Apr-10	1	1				2
May-10	6	12			18	1,232,586	224	10,930,690	20.49	May-10	4	10			14	1,123,780	181	9,974,951	18.15	May-10	2	2				4
Jun-10	4	12			16	1,471,022	240	12,301,750	19.51	Jun-10	3	11			14	1,360,183	195	11,317,005	17.23	Jun-10	1	1				2
Jul-10	12	20			32	1,068,779	256	12,837,488	19.94	Jul-10	8	11			19	931,230	205	11,837,431	17.32	Jul-10	4	9				13
Aug-10	1	14		1	16	1,134,461	256	13,489,686	18.98	Aug-10	1	12		1	14	1,022,268	209	12,491,847	16.73	Aug-10		2				2
Sep-10	10	18			28	1,049,734	265	14,059,464	18.85	Sep-10	7	14			21	942,727	222	13,066,602	16.99	Sep-10	3	4				7
Oct-10	4	16			20	1,084,059	272	14,145,008	19.23	Oct-10	3	11			14	922,227	223	12,990,314	17.17	Oct-10	1	5				6
Nov-10	5	18	29		52	1,304,679	303	14,412,568	21.02	Nov-10	5	15			20	1,073,726	222	13,026,921	17.04	Nov-10		3	29			32
Dec-10	5	12			17	1,127,580	289	14,239,325	20.30	Dec-10	4	11			15	954,553	206	12,680,651	16.25	Dec-10	1	1				2
Jan-11	4	10			14	541,067	288	13,672,822	21.06	Jan-11	3	8			11	418,702	204	12,100,838	16.86	Jan-11	1	2				3
Feb-11	2	10			12	617,782	275	13,143,634	20.92	Feb-11	1	8			9	495,654	192	11,559,373	16.61	Feb-11	1	2				3
Mar-11	15	8			23	663,586	261	12,405,066	21.04	Mar-11	13	4			17	540,088	178	10,798,638	16.48	Mar-11	2	4				6
Apr-11	9	21			30	875,744	278	12,171,079	22.84	Apr-11	7	17			24	719,042	191	10,504,180	18.18	Apr-11	2	4				6
May-11	6	23			29	795,942	289	11,734,435	24.63	May-11	2	20			22	644,612	199	10,025,012	19.85	May-11	4	3				7
Jun-11	6	22		1	29	861,803	302	11,125,216	27.15	Jun-11	3	17		1	21	697,497	205	9,362,326	21.90	Jun-11	3	5				8
Jul-11	6	20			26	1,557,941	296	11,614,378	25.49	Jul-11	5	17			22	1,411,594	208	9,842,690	21.13	Jul-11	1	3				4
Aug-11	5	24	1		30	1,689,412	310	12,169,329	25.47	Aug-11	5	21	1		27	1,542,659	222	10,363,081	21.42	Aug-11		3				3
Sep-11	5	11		3	19	1,601,358	301	12,720,953	23.66	Sep-11	3	9		3	15	1,453,480	213	10,873,834	19.59	Sep-11	2	2				4